

1           **ATTACHMENT OF *SALMONELLA* AND OTHER FOODBORNE PATHOGENS TO**  
2                                   **REUSABLE PLASTIC CONTAINERS**

3                                   John Clayborn<sup>1</sup>, Jacquelyn Adams<sup>1</sup>, and Steven C. Ricke<sup>2\*</sup>

4                                   <sup>1</sup>WBA Analytical Laboratories, 3609 Johnson Road, Springdale, AR 72762

5                                   <sup>2</sup>Center for Food Safety and Department of Food Science, University of Arkansas, Fayetteville,  
6                                   AR 72704

7  
8  
9  
10  
11  
12  
13  
14  
15  
16  
17  
18  
19 **Key words:** *Salmonella*, reusable plastic containers, attachment, biofilms, Scanning electron  
20 microscopy

21  
22  
23  
24  
25  
26  
27 \*Corresponding author:  
28 Steven C. Ricke, Ph.D.  
29 Center for Food Safety  
30 Department of Food Science  
31 University of Arkansas  
32 Fayetteville, AR 72704  
33 Phone: 479-575-4678  
34 Fax: 479-575-6936  
35 Email: sricke@uark.edu  
36  
37  
38  
39  
40  
41  
42  
43  
44  
45

## Abstract

Reusable Plastic Containers (RPC) were used for a study to determine the ability of bacteria to adhere and form biofilms on the RPCs being used in commercial settings. The three biofilm groups of interest were *Salmonella* spp., *Listeria monocytogenes*, and *E. coli* O157:H7. The RPC coupons served as the platform for generation of bacteria biofilms of these bacteria. After biofilm formation on RPC coupons by the respective bacteria the coupons were examined using Scanning Electron Microscopy (SEM) for presence of bacteria. In a second study the RPC coupons were subjected to a bacteria biofilm growth process then sanitized using methods and sanitizing agents typically found in commercial and industrial settings. In a third study the RPC coupons were exposed to a bacteria biofilm growth process then swabbed using methods that closely mimic scrubbing actions performed during sanitation processes typically used in commercial and industrial settings. In all cases bacteria not only attached to the RPC but could not be dislodged by either sanitizers or physical scrubbing.

## Introduction

Foodborne *Salmonella* continue to be a public health problem that results in illness and represents a tremendous economic cost on an annual basis (Scallan et al., 2011; McLinden et al., 2014). Numerous food sources of *Salmonella* exist with produce and most meat proteins being identified as major contributors (Hanning et al., 2009; Finstad et al., 2012; Howard et al., 2012; Foley et al., 2008, 2011, 2013). Poultry broiler meat and eggs have always been considered primary sources and continue to be fairly prominent (Finstad et al., 2012; Howard et al., 2012; Galiş et al., 2013; Painter et al., 2013; Ricke et al., 2013a,b; Pires et al., 2014;). In particular table shell eggs and layer farms have been associated with *Salmonella* outbreaks (Ricke, 2003, Dunkley et al., 2009; Howard et al., 2012; Martelli and Davies, 2012; Galiş et al., 2013; Ricke et al., 2013a,b). The number of eggs processed and shipped for retail, involves equipment capable of washing, candling, sizing, and packaging over 180,000 eggs per hour (Musgrove, 2011). Eggs produced at the farm can enter the egg processing system either in an “in-line” production system where eggs are directly moved via conveyor belts from the layer farm where they are produced directly to an egg processing facility or as an “off-line” production system where eggs are collected at the farm and subsequently transported to another site for processing (Musgrove, 2011).

However, potential contamination issues remain with certain segments of the egg retail market. Historically in the U.S., used cases, fillers and flats were considered available for reuse (Eggleton and Carpenter, 1961). However, Board et al. (1963) surveyed new, used, and dirty egg flats and observed that they could become heavily contaminated especially if they had egg albumen or yolk material remaining on them. Banwart, (1964) demonstrated that *Salmonella* and other egg contaminant bacteria could attach to these egg flats and that only autoclaving the flats

completely eliminated them. This issue has re-emerged in the U.S. for certain local markets where retail egg containers can be reused and there is the potential for contamination to occur over time if these are not properly sanitized. There is evidence for this potential risk from studies conducted on retail egg markets in other countries. Based on the recovered levels of *Salmonella* from egg shells, egg contents and egg trays in South India, Suresh et al. (2006) concluded that reused egg trays were a potential risk for exposure to *Salmonella*. After examining eggs transported from farms to wholesale and retail markets located in North India Singh et al., (2010) found *S. Typhimurium* to be the predominant serovar with a higher incidence from eggs collected in the retail markets leading them to suggest that surface contamination must have occurred during handling, storage, and transportation of the eggs from the farms to the market. In a study on Thailand egg farms and markets, Utrarachkij et al., (2012) concluded that reusable egg trays used for these eggs could serve as a potential source of horizontal *Salmonella* transmission.

From what is known the question arises as to whether *Salmonella* and other foodborne pathogens that might come in contact with surfaces such as RPC materials can attach to these surfaces and once attached, can these organisms be dislodged from such surfaces. Certainly, foodborne pathogens such as *Salmonella* and *Listeria monocytogenes* are known to attach to a variety of surfaces and furthermore can become part of communities encased in polymeric substances forming difficult to remove biofilms (Kalmokoff et al. 2001; de Oliveira et al., 2010; Steenackers et al., 2012). The objectives in the current study were to initially determine and confirm the ability of *Salmonella spp.*, *Listeria monocytogenes*, and *E. coli* O157:H7 to adhere and produce bacterial biofilms on RPC. A second objective was to determine the ability of sanitizing procedures to disrupt and eliminate *Salmonella* biofilms on RPC. A final objective

was to determine the ability of repeated swabbing to disrupt and eliminate *Salmonella* spp. biofilms on RPC.

## **Materials and Methods**

### ***Bacterial strains used in these studies***

Five *Salmonella* strains, namely, *Salmonella* Kentucky, *S. Newport*, *S. Enteritidis*, *S. Heidelberg* and *S. Typhimurium* were obtained from the WBA culture collection. Five strains of *Listeria monocytogenes* were obtained either from the American Type Culture Collection (ATCC) or the Tyson laboratory, namely, ATCC #19111 (SPR-CULRF-504), ATCC #19115 (SPR-CULRF-500), ATCC #43257 (SPR-CULRF-502), ATCC #49594 (SPR-CULRF-501), and Tyson #2926 (human isolate from lunchmeat) (SPR-CULRF-503). The *E. coli* O157:H7 strain used in this study was a non-toxin forming isolate, ATCC# 19206 (SPR-CULQC-552).

### ***Bacterial inocula preparation***

All five strains of *Salmonella* spp. were streaked onto TSA plates for isolation followed by incubation at  $35 \pm 1^\circ\text{C}$  for 18 hours. Likewise all five strains of *L. monocytogenes* were streaked onto TSA plates for isolation and incubated at  $35 \pm 1^\circ\text{C}$  for 18 hours. The *E. coli* O157:H7 was streaked onto a TSA plate for isolation and incubated at  $35 \pm 1^\circ\text{C}$  for 18 hours. After incubation, an isolated colony was picked from each TSA to 10 ml of BHI broth and incubated at  $35 \pm 1^\circ\text{C}$  for 18 hours. After incubation, 0.5 ml from each 10 ml BHI was transferred to a 40 ml BHI broth and incubated at  $35 \pm 1^\circ\text{C}$  for 18 hours. After the final incubation all five *Salmonella* serovar inocula were combined and mixed in a sterile jar. This was also done for the five *L. monocytogenes* inocula but was not required for *E. coli* O157:H7 since only strain was used.

### **RPC sample preparation and biofilm formation (Study I)**

Six RPC coupons were prepared by sanitizing each coupon and allowing each coupon to dry. Two coupons for each bacteria was prepared for testing. Of the two coupons, one coupon was used for testing and one coupon was retained for backup purposes if needed. Each coupon was triple rinsed thoroughly with sterile DI water to ensure no sanitizer residue was lingering. Three 90 ml sterile specimen cups with the respective bacterial isolate name was labelled as follows: *Salmonella spp.* – RPC, *L. monocytogenes* – RPC, *E. coli* O157:H7 – RPC. Each coupon was inserted into its respective cup along with a sterile magnetic stir bar. The stir bar was used to create extra motion within the cup during incubation. A 40 ml aliquot of appropriate growth medium was aseptically dispensed into each cup. For this study TSB was used for the *Salmonella* samples and BHI was used for both the *L. monocytogenes* and *E. coli* O157:H7 samples. A 0.5 ml aliquot of each inoculum was dispensed into appropriate cup containing coupons. The three cups were placed onto a platform shaker (set at a rotation of 110 rpm) that had been positioned in a 35±1°C incubator and incubated for 18 to 24 hr. After incubation, all cups were removed and the coupons and stir bars were individually and aseptically removed from the respective cups. The cups and inoculated growth media were discarded.

Using a sterile 25 ml pipette, the coupons were rinsed with sterile DI water to remove any loose planktonic cells. Even though they are the same organism planktonic cells were considered physiologically distinct from the cells growing in a biofilm because rather than attaching they either float or swim in the liquid growth medium. The rinsed coupons and stir bars were placed into labeled sterile 90 ml specimen cups and the above rinsing steps were repeated for each coupon individually to avoid cross contamination. Once all coupons were rinsed and placed into their respective specimen cups, 40 ml of the appropriate growth media was aseptically dispensed into each cup and coupons were confirmed as being submerged. All

three cups were incubated on the platform shaker (set at a rotation of 110 rpm) at  $35\pm 1^{\circ}\text{C}$  for 72 hours. After the final incubation, each coupon was aseptically removed, rinsed with sterile DI water, and placed in individual sterile cups. Each coupon was examined using scanning electron microscopy (SEM) for visual confirmation of attachment and biofilm development.

#### **Sanitizer application-*Salmonella* (Study II)**

All five *Salmonella* serovars were prepared as a cocktail as described previously in the biofilm study I. In this study six, 90 ml sterile specimen cups per treatment group were used, namely 5 coupons (sanitized by isopropyl prior to the study) per treatment group and an extra coupon per group, that was used for SEM imaging. After the final incubation, each coupon was aseptically removed and transferred to a tray that had been covered with foil and sanitized with isopropyl alcohol. The corner of each coupon was grasped with sanitized forceps and sterile DI water dispensed over the coupon to remove loose cells. Each coupon was placed into individual sterile cups with assurance that the respective coupons remained in its assigned group.

For the sanitizer treatments the respective concentration and water temperature was based on typical commercial and/or industrial standard limits for sanitization processes. The hot water used in each treatment group measured  $123.5^{\circ}\text{F}$ . Water pressure used for the spray was not measured; however the water flow was set to “full force”. Treatment 1 (Hot Water + Alkaline Detergent) was conducted as follows: The corner of the coupon was grasped and each side of the coupon was sprayed for 5 seconds with hot water using a spray nozzle attached to the sink faucet. After the hot water spray, the coupon was dipped in the alkaline detergent mixture and aggressively moved back and forth for 5 seconds, then placed on a wire rack and allowed to dry for two minutes. The coupon was subsequently placed in a sterile stomacher bag.

Treatment 2 (Hot Water + Alkaline Detergent + 200 ppm to 400 ppm )was conducted as follows: The corner of the coupon was grasped and each side of the coupon sprayed for 5 seconds with hot water using a spray nozzle attached to the sink faucet. After the hot water spray, the coupon was dipped in the alkaline detergent mixture and aggressively moved back and forth for 5 seconds. After removal, the coupon was quickly shaken to remove excess detergent mixture. Next, the coupon was dipped in the quaternary ammonium mixture and aggressively moved back and forth for 5 seconds. For this treatment the concentration of the quaternary ammonium was set at 250 ppm. Again, after removal, the coupon was shaken to remove excess sanitizer followed by placement on a wire rack, allowed to dry for two minutes and placed in a sterile stomacher bag.

Treatment 3 (200 ppm to 400 ppm quaternary ammonium) was conducted as follows: The corner of the coupon was grasped, dipped in the quaternary ammonium mixture, aggressively moved back and forth for 5 seconds, and shaken to remove excess. For this treatment, the concentration of the quaternary ammonium was 250 ppm. Once again the coupon was placed on a wire rack, allow to dry for two minutes and then placed in a sterile stomacher bag. Treatment 4 (Hot Water + Alkaline Detergent + approximately 200ppm Chlorine Solution) was conducted as follows: The corner of the coupon was grasped and each side of the coupon sprayed for 5 seconds with hot water using a spray nozzles attached to the sink faucet. After the hot water spray, the coupon was dipped in the alkaline detergent mixture and aggressively moved back and forth for 5 seconds then shaken to remove excess detergent mixture. Next, the coupon was dipped in a chlorine and water mixture, aggressively moved back and forth for 5 seconds, then shaken to remove the excess. For this study the concentration of the chlorine solution was 205



ppm. The coupon was placed on a wire rack, allowed to dry for two minutes followed by placement in a sterile stomacher bag.

Treatment 5 (approximately 200 ppm chlorine solution) was conducted as follows: The corner of the coupon was grasped, dipped in the chlorine solution, aggressively moved back and forth for 5 seconds, and finally shaken to remove excess. For this treatment the concentration of the chlorine solution was 200 ppm. The coupon was placed on a wire rack, allowed to dry for two minutes and placed in a stomacher bag. Treatment 6 (Untreated Control) was conducted as follows: The corner of the coupon grasped but not exposed to treatment and instead transferred directly to a sterile stomacher bag. The extra coupons needed for SEM imaging were removed from the treatment groups and held at a refrigerated temperature.

A PC1 Master Test Kit (titration kit to test concentration of quaternary ammonium and chlorine) was used to determine the actual level of quaternary ammonium and chlorine for the respective treatment. Once all treatments were performed and all coupons were in their corresponding stomacher bags, 20 mLs of sterile buffered peptone water was added and they were shaken vigorously for 30 seconds. All samples were incubated at  $35\pm 1^{\circ}\text{C}$  for 18 to 24 hours. After incubation, the coupon samples were tested for the presence of *Salmonella spp.* using the BAX® PCR system. Each coupon was examined using SEM for visual confirmation of attachment and potential biofilm formation.

### ***Salmonella spp.* Biofilm Formation Process and Impact of Swabbing (Study III)**

All five *Salmonella* serovars were prepared as a cocktail as described previously in the biofilm study I. The RPC coupons were prepared by sanitizing each coupon with 70% isopropyl alcohol and allowed to dry. Each coupon was aseptically and thoroughly rinsed with sterile DI water to remove any sanitizer residue. Five, 90 ml sterile specimen cups were labelled and RPC

coupons inserted into each cup. Aliquots (40 ml) of Tryptic Soy Broth (TSB) were aseptically dispensed into each cup followed by adding a 0.5 ml inoculum into each cup containing the coupon and TSB. The inoculated cups were placed onto a platform shaker that had been positioned in a  $35 \pm 1^\circ\text{C}$  incubator, started (set at 110 rpm) and incubated for 18 hours. After the 18 hours incubation, all coupons were removed individually and aseptically from the respective cups. Cups and inoculated growth medium were discarded. Using a sterile 25 ml pipette, the coupon were rinsed with sterile DI water to remove any loose planktonic cells placed into a labeled sterile 90 ml specimen cup and the above rinsing steps were repeated for each cup individually to prevent any type of cross contamination during the biofilm formation process. Once all coupons were rinsed and placed into specie cups, 40 ml of the TSB was aseptically dispensed into the cup and ensured that the coupon was submerged in broth. All cups were incubated on the platform shaker at  $35 \pm 1^\circ\text{C}$  for 72 hours.

After the final incubation each coupon was aseptically removed and transferred to a tray that has been covered with foil and sanitized with isopropyl alcohol. Using sanitized forceps, the corner of the coupon was grasped and sterile DI water dispensed over the coupon to remove loose cells. Each coupon was placed into individual sterile cups and allow coupons to dry. Coupons were picked up with sterile gloves and the entire coupon surface was swabbed using a PUR-Blue™ DUO™ swab that was moistened with buffered peptone water. Swabbing was done aggressively and with pressure with the intent of removing as much *Salmonella* biofilm as possible. The swab was returned to its corresponding tube filled with 9 ml of buffered peptone water. The swabbing was repeated two more times (for a total of three swabs per coupon) changing swabs for each repetition and was repeated for each of the 5 coupons. Once all swabs were performed, the RPC coupons were placed into a sterile stomacher bag and 20 ml of sterile

buffered peptone water was added. A negative control was prepared by pouring 20ml of the buffered peptone water into a sterile stomacher bag. A positive control was prepared by pouring 20 ml of the buffered peptone Water into a sterile stomacher bag. One Salmonella Bioball® was added to the buffered peptone water. All samples (swabs and coupons) were incubated at 35±1°C for 18 to 24 hours. After incubation, test samples and controls were tested for the presence of *Salmonella* using the BAX®system.

#### ***Disposal protocols for samples and chemicals***

Samples and testing materials were disposed of at completion of analysis with the approval of the WBA project's team leader and reference to WI-A-011 (Laboratory Waste and Disposal) for disposal procedures. When chemicals were used in the project, they were held on site for future use, returned to the customer, or discarded. Handling, storage, and/or disposal of all chemicals were performed appropriately according to the MSDS and actions taken was noted in the Research Project Design Form.

## **RESULTS**

### **Biofilm formation for Multiple Foodborne Pathogens (Study I)**

Reusable Plastic Containers were used for a study to determine the ability of different foodborne pathogenic bacteria to adhere and form biofilms on the RPCs being used in commercial settings. The three biofilm groups of interest were *Salmonella* spp., *Listeria monocytogenes*, and *E. coli* O157:H7. The *Salmonella* spp. biofilm was comprised of serovars *S.* Newport, *S.* Kentucky, *S.* Heidelberg, *S.* Enteritidis, and *S.* Typhimurium. The *L. monocytogenes* biofilm consisted of one poultry isolate and four human isolates while the *E. coli* O157:H7 was a non-toxin forming strain. The RPC's were disassembled and cut into 1 in<sup>2</sup> pieces (referred to as coupons). Preliminary work using Scanning Electron Microscopy (SEM)

provided visual confirmation of *S. Enteritidis* adhering to the RPC and stainless steel coupons.

An SEM examination of *Listeria monocytogenes* and *E. coli* O157:H7 inoculated RPC coupons indicated that they were able to attach to RPC as well (see figures with corresponding SEM pictures attached for study I).

### **Sanitizer application-*Salmonella* (Study II)**

A study was performed to evaluate the ability of five treatment methods typically used in commercial/industrial settings for sanitation to disrupt and remove *Salmonella spp.* biofilms on the RPC. The *Salmonella spp.* biofilm was comprised of *S. Newport*, *S. Kentucky*, *S. Heidelberg*, *S. Enteritidis*, and *S. Typhimurium*. The RPC's were disassembled and cut into 1 in<sup>2</sup> coupons. After each coupon was subjected to a biofilm formation process, the coupons were cleaned/sanitized using products (quaternary ammonium and chlorine) and methods typically used in commercial/industrial settings to sanitize equipment and supplies.

After the incubation, all coupons were analyzed using BAX® PCR for the detection of *Salmonella spp.* In the case of this study, all RPC coupons from all treatment groups tested positive for the presence of *Salmonella* serovars (see Table 1). Simultaneously, the extra coupons from each treatment group were examined using SEM to confirm the presence of *Salmonella spp.* biofilm on coupons from each group. Based on SEM and PCR analyses, *Salmonella* cells were still attached even after administration of the respective sanitizers. All SEM images confirmed that a *Salmonella* biofilm-like structure remained intact after administration of the various sanitizers (see figures with corresponding SEM pictures attached for study II).

### ***Salmonella spp.* Biofilm Formation Process and Impact of Swabbing (Study III)**

Reusable Plastic Containers were used for a study to determine the ability of repeated swabbing to disrupt and remove *Salmonella* biofilms that are formed on the RPCs. The

*Salmonella* spp. biofilm were comprised of *S. Newport*, *S. Kentucky*, *S. Heidelberg*, *S. Enteritidis*, and *S. Typhimurium*. The RPC's were disassembled and cut into 1 in<sup>2</sup> coupons. Preliminary work using scanning electron microscopy (SEM) provided visual confirmation of *Salmonella* serovars adhered to the RPC coupons (data not shown). After each coupon was subjected to a biofilm formation process, the coupons were swabbed three consecutive times, using a different swab each time, to determine if the repeated swabbing action could remove the *Salmonella* biofilm from the RPC coupons.

After the incubation, all coupons and swabs were analyzed using BAX® - based PCR analyses for the detection of *Salmonella* spp. In the case of this study, all RPC coupons and swabs tested positive for the presence of *Salmonella* serovars (data not shown). A positive control and a negative control were run along with the coupon and swab samples to eliminate the suspension of false positives that could occur due to contaminated media. Also, internal positive controls were contained in the BAX® system to assure PCR success. Based on SEM and PCR analyses the *Salmonella* serovars remained attached after repeated swabbing.

## **DISCUSSION and CONCLUSIONS**

The SEM images gave evidence that each bacteria (*Salmonella*, *Listeria* and *E. coli*) were capable of attaching to the RPC and forming biofilms. Likewise the PCR detection analyses confirmed that at least in the case of the *Salmonella* attachment studies that the bacteria showing up on the SEM were indeed *Salmonella*. While certain *Salmonella* serovars such as *S. Enteritidis* are well known for being present in egg production and processing (Howard et al., 2012) there is precedent for foodborne pathogens such as *Listeria* to also occur in these environments. *Listeria* spp. can be found in many food processing plant environments (Milillo et al. 2012a) but have isolated and characterized in poultry, eggs, egg wash water and egg processing equipment (Laird

et al, 1991; Farber et al., 1992; Jones et al, 2006; Jones and Musgrove, 2008a,b; Milillo et al. 2012b). Likewise, Jones and Musgrove (2008a,b) also observed the presence of *Escherichia* isolates from these characterized microbial populations in the egg processing samples but these isolates were not further identified to determine if they were foodborne pathogen species *Escherichia*. Given the high frequency of *Listeria* species (particularly *L. innocua*) after characterizing the microbial populations in rinsates from egg vacuum loaders in mixed and off-site egg production plants, Jones and Musgrove (2008a,b) speculated that egg vacuum loaders were a potential contamination site for *Listeria*. From these studies it is not clear whether they originally were attached to incoming egg flat surfaces or were part of the plant facility environment microflora and this remains to be determined. However, the current SEM studies do suggest that *L. monocytogenes* certainly can attach and form biofilms on RPC materials that would compose egg flats. This would certainly be consistent with *Listeria*'s ability to form biofilms on other surfaces (Kalmokoff et al. 2001; de Oliveira et al., 2010).

In study II, the SEM images and BAX® results gave evidence that the sanitizing methods and agents used in this study were not effective in disrupting and eliminating *Salmonella spp.* biofilms from RPC surfaces. In this study all coupons were cut from flat, smooth areas of the RPC which represent areas that should be easily cleaned during sanitation. Areas of the RPC that have raised edges, textured surfaces and hard to access recessed areas would be of high concern due to the ability of biofilms to form in these areas and the inability of typical sanitizing methods to reach these areas. In summarizing what is known about *Salmonella* and biofilm formation Steenackers et al. (2012) noted that *Salmonella* are not only capable of forming biofilms on a wide range of abiotic surfaces including plastic, rubber, cement, glass, and stainless steel representing materials all commonly encountered in food processing environments, but

bacteria in general that exist as a biofilm community are well protected against environmental stresses such as disinfectants.

The SEM images provide evidence that the selected sanitizer treatments administered in this study (chlorine and quaternary ammonium) did not effectively remove the developed *Salmonella spp.* biofilms on the RPC. When sanitizers are employed in an egg processor facility this generally occurs as a rinse solution containing a chlorine concentration of 100 to 200 ppm, or a quaternary ammonium-based compound that is administered immediately after the alkaline egg wash cleaning step as a rinse solution (Hutchinson et al., 2003; Howard et al., 2012). However given the constant search for improved efficacy coupled with reduced costs a wide range of sanitizers have been examined for potential use in egg processing (Berardinelli et al., 2011; Howard et al., 2012; Galiş et al. 2013). Not only sanitizers based on botanical compounds, enzyme catalyzed bactericidal reactions, or electrolyzed water (Kuo et al., 1997b; McKee et al., 1998; Knape et al., 1999, 2001; Russell, 2003; Bialka et al., 2004; Park et al., 2005; Cao et al., 2009; Upadhyaya et al., 2013) have been examined but exposing shell eggs or egg processing equipment to ultraviolet light, non-thermal atmospheric gas plasma, ozone, or ionizing radiation has also been also assessed for their relative effectiveness (Gao et al., 1997; Kuo et al., 1997a,c; Chavez et al., 2002; Rodriguez-Romo & Yousef, 2005; Keklik et al., 2010; Ragni et al., 2010). In future studies it will be critical to examine whether any of these alternative sanitizing or disinfectant approaches have the potential efficacy against *Salmonella* and other foodborne pathogens after they have formed biofilm communities on the surfaces of egg processing equipment and egg handling materials. The relative effectiveness of the respective sanitizer in question may be the best predictor for potential success against biofilms in these types of environments.

In study III the BAX® PCR results provided evidence that the repeated swabbing methods used in this study were not effective in eliminating *Salmonella* spp. biofilms from the surfaces of RPC's. The swabbing methods used were to mimic a typical scrubbing action that may be used during sanitation in a commercial and/or industrial setting. This is consistent with the results of study II indicating that typical sanitizers were ineffective in *Salmonella* removal and would suggest that general efforts to clean and disinfectant these types of surfaces may not be sufficient. However, several issues remain to be resolved. For example, the question remains as to whether *Salmonella* in these biofilms would not only be capable of attaching and remaining on surfaces but would they also shed cells onto anything that may come in contact with the biofilm (such as hands during transport or objects transported or stored in the RPC). In addition, little is known about the interaction between the type of packaging and the cross contamination that may occur between it and the table shell egg. At least in the processing plant there is some indication that cross contamination does occur between contaminated equipment and the eggs during transient processing (Davies and Breslin, 2003). Certainly it is conceivable that potential microbial cross contamination could occur depending on the type of packaging material, particularly if it is reused and not properly cleaned.

Finally, microbial contamination on surfaces such as RPC materials will most likely consist of more than one bacterial species and will probably be a fairly complex microbial consortia. How this microbial composition influences the before and after biofilm formation by organisms such as *Salmonella* may impact not only the extent of biofilm formation but the ability to not only clean and sanitize surfaces containing these biofilms. More comprehensive microbial studies need to be conducted to better identify the dynamics of microbial diversity and their potential interactions with foodborne pathogens such as *Salmonella* spp. Microbiome



379 sequencing offers opportunities to much more thoroughly characterize these microbial  
380 population and detect patterns that may contribute to the more persistent contamination  
381 problems. Elucidating these microbial populations may allow for an assessment of the sequence  
382 of events that initiates biofilm formation and which non-*Salmonella* microbial species are most  
383 likely to favor *Salmonella* establishment in the biofilm matrix.

384

## References

- Banwart, G. F. (1964). Elimination of *Salmonellae* from inoculated filler flats. *Poultry Sci.* **43**, 939-941.
- Berardinelli, A., Cevoli, C., Fabbri, A., Guerzoini, M.E., Manfreda, G., Pasquali, F., Ragni, L. & Vannini, L. (2011). Chapter 10. Alternative egg decontamination techniques to washing. In: *Improving the safety and quality of eggs and egg products. Volume 2: Egg safety and nutritional quality*. F. Van Immerseel, Y. Nys and M. Bain (Eds.), pp.330-350. Woodhead Publishing Limited, Oxford, UK.
- Bialka, K.L., Demirci, A., Knabel, S.J., Patterson, P.H., & Puri, V.M. (2004). Efficacy of electrolyzed oxidizing water for the microbial safety and quality of eggs. *Poultry Sci.* **83**, 2071-2078.
- Board, R.G., Ayres, J.C., Kraft, A.A., & Forsythe, R.H. (1963). The microbiological contamination of egg shells and egg packing materials. *Poultry Sci.* **42**, 584-595.
- Cao, W., Zhu, Z.W., Shi, Z.X., Wang, C.Y. & Li, B.M. (2009) Efficiency of slightly acidic electrolyzed water for inactivation of *Salmonella enteritidis* and its contaminated shell eggs. *Int. J. Food Microbiol.* **130**, 88–93.
- Chavez, C., Knape, K.D., Coufal, C.D., & Carey, J.B. (2002) Reduction of eggshell aerobic plate counts by ultraviolet irradiation. *Poultry Sci.* **81**, 1132–1135.
- de Oliveira, M.M.M., Brugnara, D.F., Alves, E., & Piccoli, R.H. (2010). Biofilm formation by *Listeria monocytogenes* on stainless steel surface and biotransfer potential. *Brazilian J. Microbiol.* **41**, 97-106.
- Davies, R. & Breslin, M. (2003). Investigation of *Salmonella* contamination and disinfection in farm egg-packing plants. *J. Appl. Microbiol.* **94**, 191–196.
- Dunkley, K.D., Callaway, T.R., Chalova, V. I., McReynolds, J. L., Hume, M. E., Dunkley, C. S., Kubena, L. F., Nisbet, D. J., & Ricke, S. C. (2009). Foodborne *Salmonella* ecology in the avian gastrointestinal tract. *Anaerobe*, **15 (Sp. Iss. SI)**, 26-35.
- Eggleton, L.Z. & Carpenter, C.D. (1961). The use of reclaimed egg cases in the shell egg and egg products trade. *Poultry Sci.* **40**, 720-727.
- Farber, J.M., Daley, E., & Coates, F. (1992) Presence of *Listeria* spp. in whole eggs and wash water samples from Ontario and Quebec. *Food Res. Int.* **25**, 143-145.
- Finstad, S., O'Bryan, C.A., Marcy, J.A., Crandall, P.G., & Ricke, S.C. (2012). *Salmonella* and broiler production in the United States: relationship to foodborne salmonellosis. *Food Res. Int.* **45**, 789-794.
- Foley, S.L., Johnson, T.J., Ricke, S.C., Nayak, R. & Danzeisen, J. (2013). *Salmonella* pathogenicity and host adaptation in chicken-associated serovars. *Microbiol. Mol. Biol. Revs.* **77**, 582-607.
- Foley, S., R. Nayak, R., Hanning, I.B., Johnson, T.L., Han, J., & Ricke, S.C. (2011). Population dynamics of *Salmonella enterica* serotypes in commercial egg and poultry production. *Appl. Environ. Microbiol.* **77**, 4273-4279.
- Foley, S.L., Lynne, A.M., & Nayak, R. (2008). *Salmonella* challenges: Prevalence in swine and poultry and potential pathogenicity of such isolates. *J. Animal Sci.* **86 (E. Suppl.)**, E149–E162.

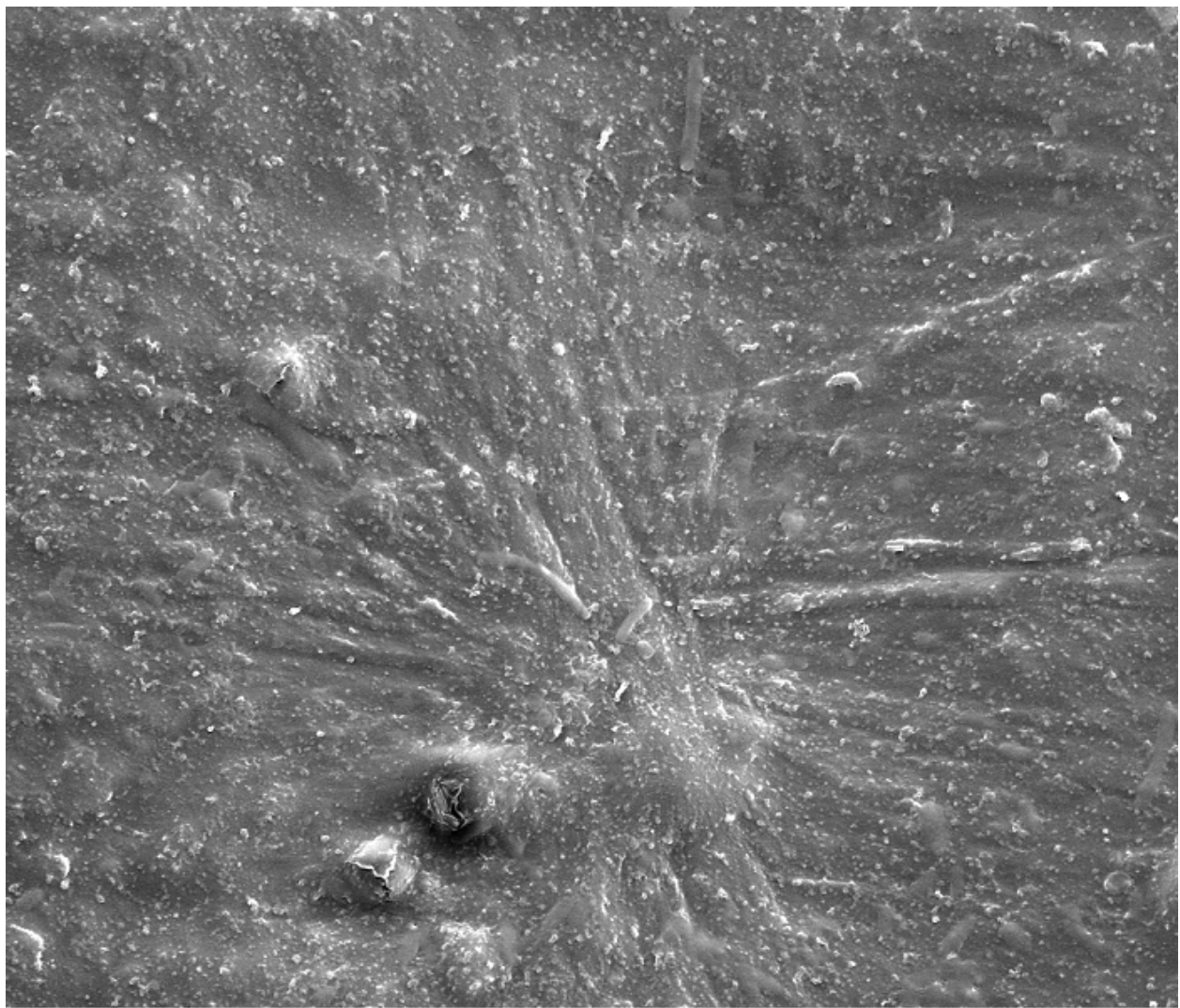
- Galiş, A.N., Marcq, C., Marlier, D. Portetelle, D., Van, I., Beckers, Y. & Théwis, A. (2013). Control of *Salmonella* contamination of shell eggs—Preharvest and postharvest methods: A review. *Comp. Revs. Food Sci. Food Safety*. **12**, 155–182.
- Gao, F., Stewart, L. E., Joseph, S. W. & Carr, L. E. (1997). Effectiveness of ultraviolet light irradiation in reducing the numbers of *Salmonella* on eggs and egg belt conveyor materials. *Appl. Engineer. Agric.* **13**, 355–359.
- Hanning, I., Nutt, J.D., & Ricke, S.C. (2009). Salmonellosis outbreaks due to fresh produce: Sources and potential intervention measures. *Foodborne Path. Dis.* **6**, 635–648.
- Howard, Z.R., O'Bryan, C.A., Crandall, P.G., & Ricke, S.C. (2012). *Salmonella* Enteritidis in shell eggs: Current issues and prospects for control. *Food Res. Int.* **45**, 755–764.
- Hutchison, M.L., Gittins, J., Walker, A. Moore, A., Burton, C. & Sparks. (2003). Washing table eggs: A review of the scientific and engineering issues. *World's Poultry Sci. J.* **59**, 233–248.
- Jones, D.R. & Musgrove, M.T. (2008a) Identification of *Enterobacteriaceae* on vacuum loaders in shell egg processing. *Poultry Sci.* **87**, 1678–1681.
- Jones, D.R. & Musgrove, M.T. (2008b) Assessment of microbial contaminants present on vacuum loaders in shell egg processing facilities. *J. Food Safety* **28**, 346–354.
- Jones, D.R., Musgrove, M.T., Caudill, A.B., & Curtis, P.A. (2006) Frequency of *Salmonella*, *Campylobacter*, *Listeria*, and Enterbacteriaceae detection in commercially cool water-washed shell eggs. *J. Food Safety* **26**, 264–274.
- Kalmokoff, M.L., Austin, J.W., Wan, X.-D., Sanders, G., Banerjee, S. & Farber, J.M. (2001). Adsorption, attachment and biofilm formation among isolates of *Listeria monocytogenes* using model conditions. *J. Appl. Microbiol.* **91**, 725–734.
- Keklik, N.M., Demirci, A., Patterson, P.H., & Puri, V.M. (2010). Pulsed UV light inactivation of *Salmonella* Enteritidis on eggshells and its effects on egg quality. *J. Food Prot.* **73**, 1408–1415.
- Knape, K.D., Carey, J.B., & Ricke, S.C. (2001). Response of foodborne *Salmonella* spp. marker strains inoculated on egg shell surfaces to disinfectants in a commercial egg washer. *J. Environ. Sci. Health Part B-Pesticides, Food Contaminants Agric. Wastes*, **36**, 219–227.
- Knape, K.D., Carey, J.B., Burgess, R.P., Kwon, Y.M., & Ricke, S.C. (1999) Comparison of chlorine with an iodine based compound on eggshell surface microbial populations in a commercial egg washer. *J. Food Safety* **19**, 185–194.
- Kuo, F.L., Carey, J.B., & Ricke, S.C. (1997a) UV irradiation of shell eggs: Effect on populations of aerobes, molds, and inoculated *Salmonella typhimurium*. *Journal of Food Protection*, **60**: 639–643.
- Kuo, F.L., Kwon, Y.M., Carey, J.B., Hargis, B.M., Krieg, D.P., & Ricke, S.C. (1997b). Reduction of *Salmonella* contamination on chicken egg shells by a peroxidase-catalyzed sanitizer. *J. Food Sci.* **62**, 873–874, 884.
- Kuo, F.-L., Ricke, S.C., & Carey, J.B. (1997c) Shell egg sanitation- UV radiation and egg to effectively reduce populations of aerobes, yeasts, and molds. *J. Food Prot.* **60**, 694–697.
- Laird, J.M. Bartlett, F.M., & McKellar, R.C. (1991) Survival of *Listeria monocytogenes* in eggwash water. *Int. J. Food Microbiol.* **12**, 115–122.
- Martelli, F. & Davies, R.H. (2012). *Salmonella* serovars isolated from table eggs: An overview. *Food Res. Int.* **45**, 745–754.
- McKee, S.R., Kwon, Y.M., Carey, J.B., Sams, A.R. & Ricke, S.C. (1998) Comparison of a peroxidase-catalyzed sanitizer with other egg sanitizers using a laboratory-scale sprayer.

- J. Food Safety* **18**, 173-183.
- McLinden, T., Sargeant, J.M., Thomas, M.K., Papadopoulos, A. & Fazil. (2014). Association between component costs, study methodologies, and foodborne illness – Related factors with the cost of nontyphoidal *Salmonella* illness. *Foodborne Pathogens Dis.* **11**, 718-726.
- Milillo, S.R., Friedly, E.C., Saldivar, J.C., Muthaiyan, A., O'Bryan, C.A., Crandall, P.G., Johnson, M.G., & Ricke, S.C. (2012a) A review of the ecology, genomics and stress response of *Listeria innocua* and *Listeria monocytogenes*. *Crit. Reviews in Food Sci. and Nutr.* **52**, 712-725.
- Milillo, S.R., Stout, J.C., Hanning, I.B., Clement, A., Fortes, E.D., den Bakker, H.C., Wiedemann, M., & Ricke, S.C. (2012b) Characteristics of *Listeria* from pasture-reared poultry reveals *L. monocytogenes* and hemolytic *L. innocua* in poultry ceca and the pasture environment. *Poultry Sci.* **91**, 2158–2163.
- Musgrove, M.T. (2011). Chapter 1. Microbiology and safety of table eggs. In: *Improving the safety and quality of eggs and egg products. Volume 2: Egg safety and nutritional quality*, F. Van Immerseel, Y. Nys and M. Bain (Eds.), pp.3-33. Woodhead Publishing Limited, Oxford, UK.
- Painter, J.A., Hoekstra, R.M., Ayers, T., Tauxe, R.V., Braden, C.R., Angulo, F., Angulo, F.J., & Griffin, P.M. (2013). Attribution of foodborne illnesses, hospitalizations, and deaths to food commodities by using outbreak data, United States, 1998-2008. *Emerg. Infectious Dis.* **19**, 407-415.
- Park, C.-M., Hung, Y.-C., Lin, C.-S., and Brackett, R.E. (2005) Efficacy of electrolyzed water in inactivating *Salmonella enteritidis* and *Listeria monocytogenes* on shell eggs. *J. Food Prot.* **68**, 986–990.
- Pires, S.M., Viera, A.R., & Cole, D. (2014) Source attribution of human salmonellosis: An overview of methods and estimates. *Foodborne Pathogens Dis.* **11**, 667-676.
- Ragni, L., Berardinelli, A., Vannini, L., Montanari, C., Sirri, F., Guerzoni, M. E., & Guarnieri, A. (2010) Non-thermal atmospheric gas plasma device for surface decontamination of shell eggs. *J. Food Engineering* **100**, 125–132.
- Ricke, S.C., Dunkley, C.S., & Durant, J.A. (2013a). A review on development of novel strategies for controlling *Salmonella* Enteritidis colonization in laying hens: Fiber – based molt diets. *Poultry Sci.* **92**, 502–525.
- Ricke, S.C. Jones, D.R., & Gast, R.K. (2013b). Chapter 46. Eggs and egg products. In: S. Doores, Y. Salfinger, and M. L. Tortorello (Eds.), *Compendium of methods for the microbiological examinations of foods*, 5<sup>th</sup> Edition. (pp. 1-11). Washington D.C. American Public Health Association.
- Ricke, S.C. (2003). The gastrointestinal tract ecology of *Salmonella* Enteritidis colonization in molting hens. *Poultry Sci.* **82**, 1003-1007.
- Rodriguez-Romo & Yousef, A.E. (2005) Inactivation of *Salmonella enterica* serovar Enteritidis on shell eggs by ozone and UV radiation. *J. Food Prot.* **68**, 711–717.
- Russell, S.M. (2003). The effect of electrolyzed oxidative water applied using electrostatic spraying on pathogenic and indicator bacteria on the surface of eggs. *Poultry Sci.* **82**, 158-162.
- Scallan, E., Hoekstra, R.M., Angulo, F.J., Tauxe, R.V., Widdowson, M-A., Roy, S.L., Jones, J.L., & Griffen P.M. (2011). Foodborne illness acquired in the United States—major pathogens, *Emerg. Infect. Dis.* **17**, 7-15.

- Singh, S., Yadav, A.S., Singh, S.M., & Bharti, P. (2010) Prevalence of *Salmonella* in chicken eggs collected from poultry farms and marketing channels and their antimicrobial resistance. *Food Res. Int.* **43**, 2027–2030.
- Steenackers, H., Hermans, K., Vanderleyden, J., & De Keersmaecker, S.C.J. (2012) *Salmonella* biofilms: An overview on occurrence, structure, regulation and eradication. *Food Res. Int.* **45**, 502–531.
- Suresh, T., Hatha, A.A.M., Sreenivasan, D., Sangeetha, N., & Lashmanaperumalsamy, P. (2006) Prevalence and antimicrobial resistance of *Salmonella* enteritidis and other salmonellas in the eggs and egg-storing trays from retails markets of Coimbatore, South India. *Food Microbiol.* **23**, 294–299.
- Upadhyaya, I., Upadhyay, A., Kollanoor-Johny, A., Baskaran, S.A., Mooyottu, S., Darre, M.J., & Venkitanarayanan, K. (2013) Rapid inactivation of *Salmonella* Enteritidis on shell eggs by plant-derived antimicrobials. *Poultry Sci.* **92**, 3228–3235.
- Utrarachkij, F., Pornraungwong, S., Siripanichgon, K., Nakajima, C., Suzuki, Y., and Suthienkul, O. (2012) Possible horizontal transmission of *Salmonella* via reusable egg trays in Thailand. *Int. J. Food Microbiol.* **154**: 73–78.

**Table 1- BAX PCR Results – Study II**

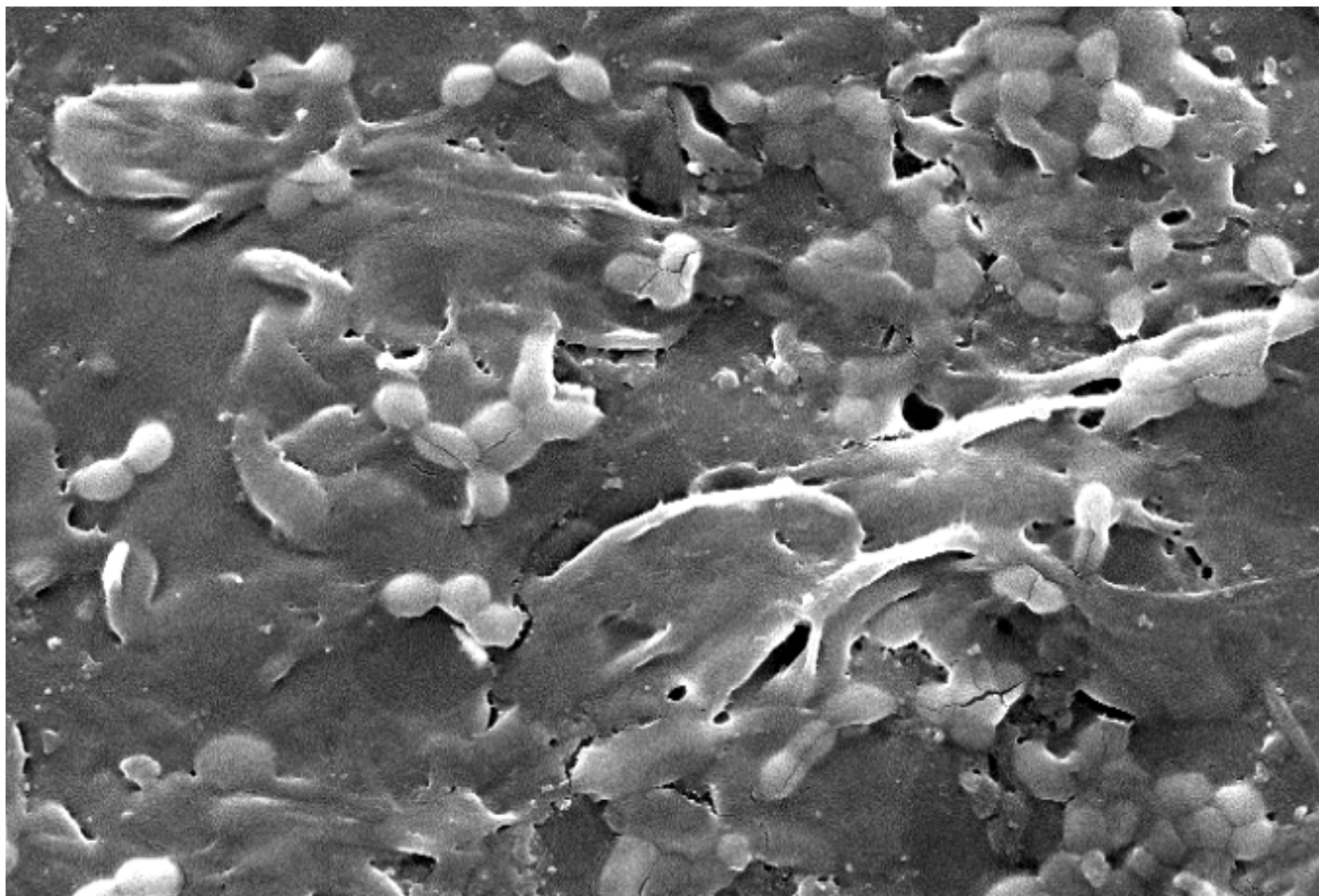
Treatment: <b>n=5</b>	Salmonella Result
Treatment 1: RPC 1 to RPC 5	POSITIVE
Treatment 2: RPC 1 to RPC 5	POSITIVE
Treatment 3: RPC 1 to RPC 5	POSITIVE
Treatment 4: RPC 1 to RPC 5	POSITIVE
Treatment 5: RPC 1 to RPC 5	POSITIVE
Treatment 6: RPC 1 to RPC 5	POSITIVE



**Salmonella Biofilm on RPC**  
**Study 1**

553  
554  
555  
556  
557  
558  
559  
560

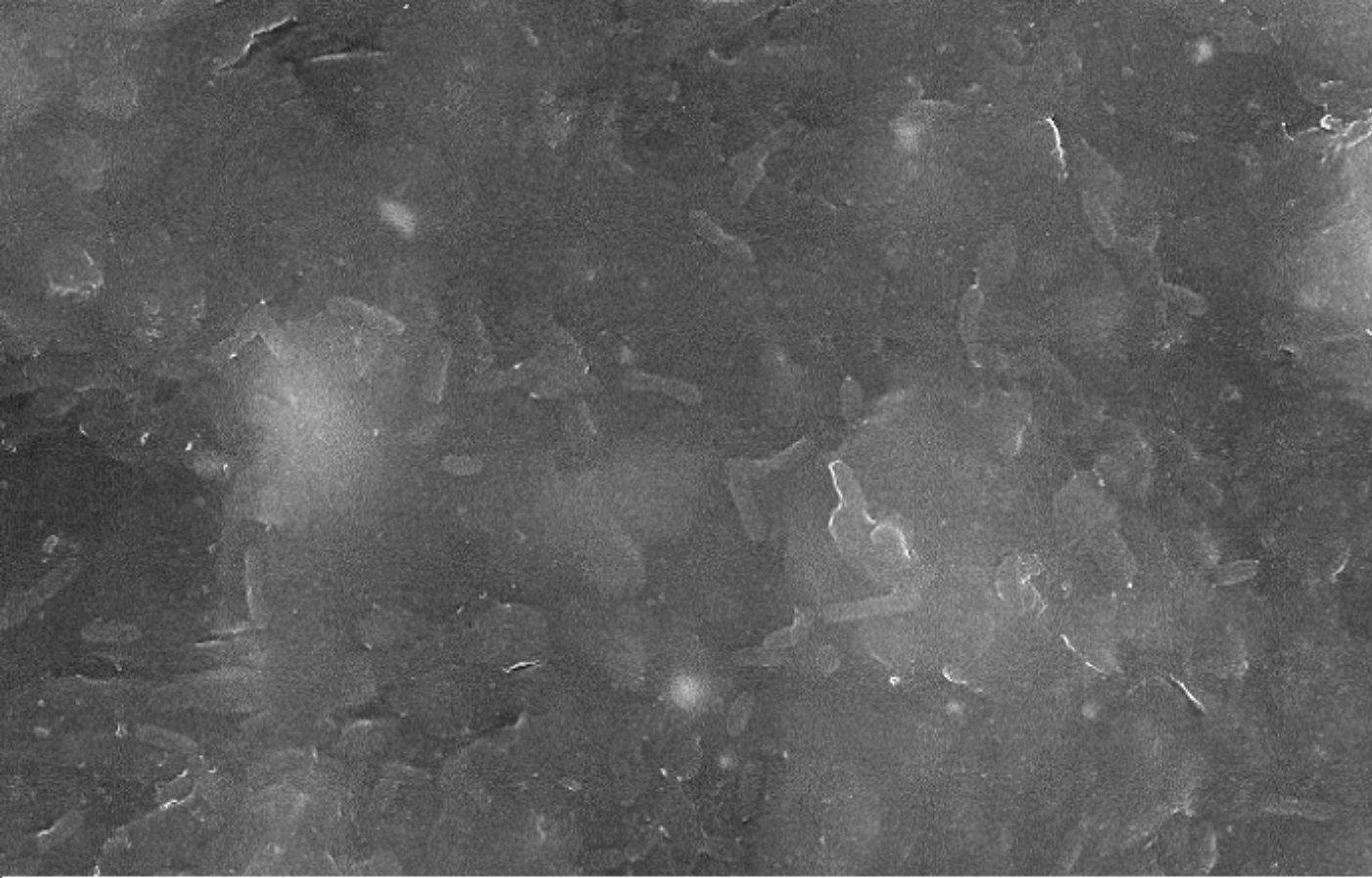




**E. coli O157:H7 Biofilm on RPC**  
**Study 1**

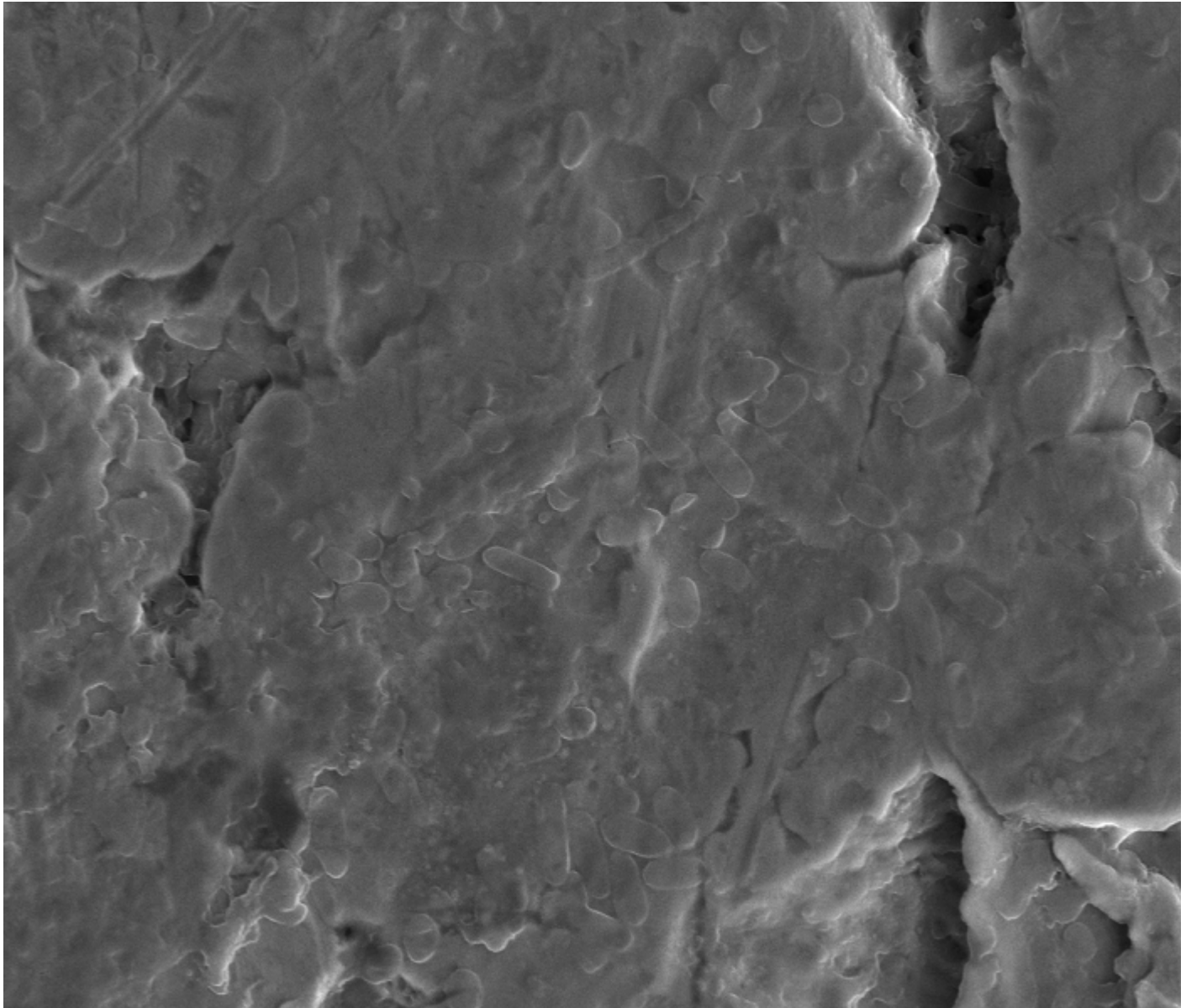
561  
562  
563  
564  
565





**Listeria monocytogenes Biofilm  
Study 1**

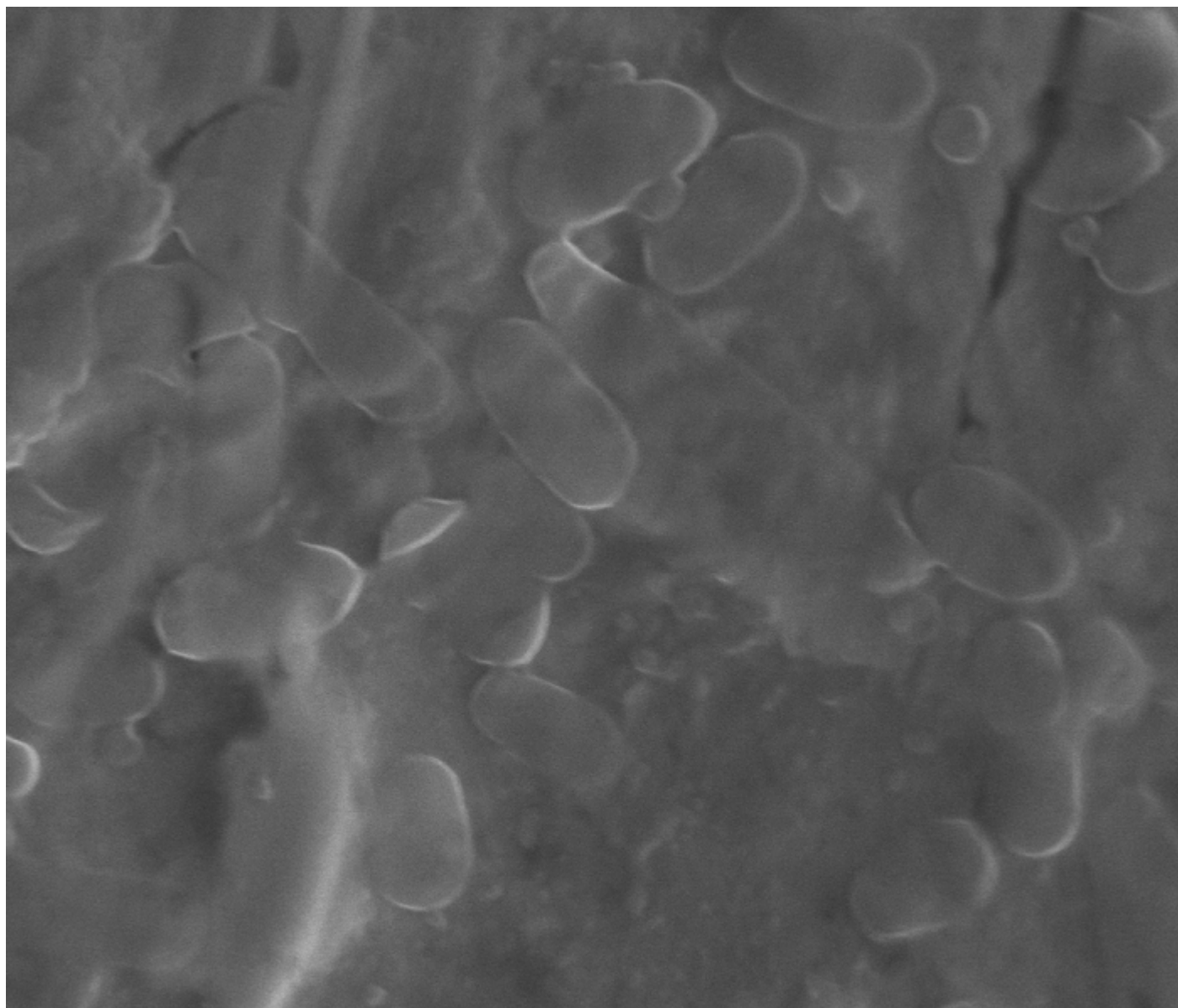
566  
567  
568  
569  
570  
571  
572  
573



**Salmonella Biofilm on RPC - Study 2**  
**Treatment 1: Hot Water + Alkaline Detergent**

574  
575  
576  
577  
578  
579  
580  
581  
582  
583  
584

585



**Salmonella Biofilm - Study 2**

**Treatment 2: Hot Water/Alkaline Detergent + Quaternary Ammonium**

586

587

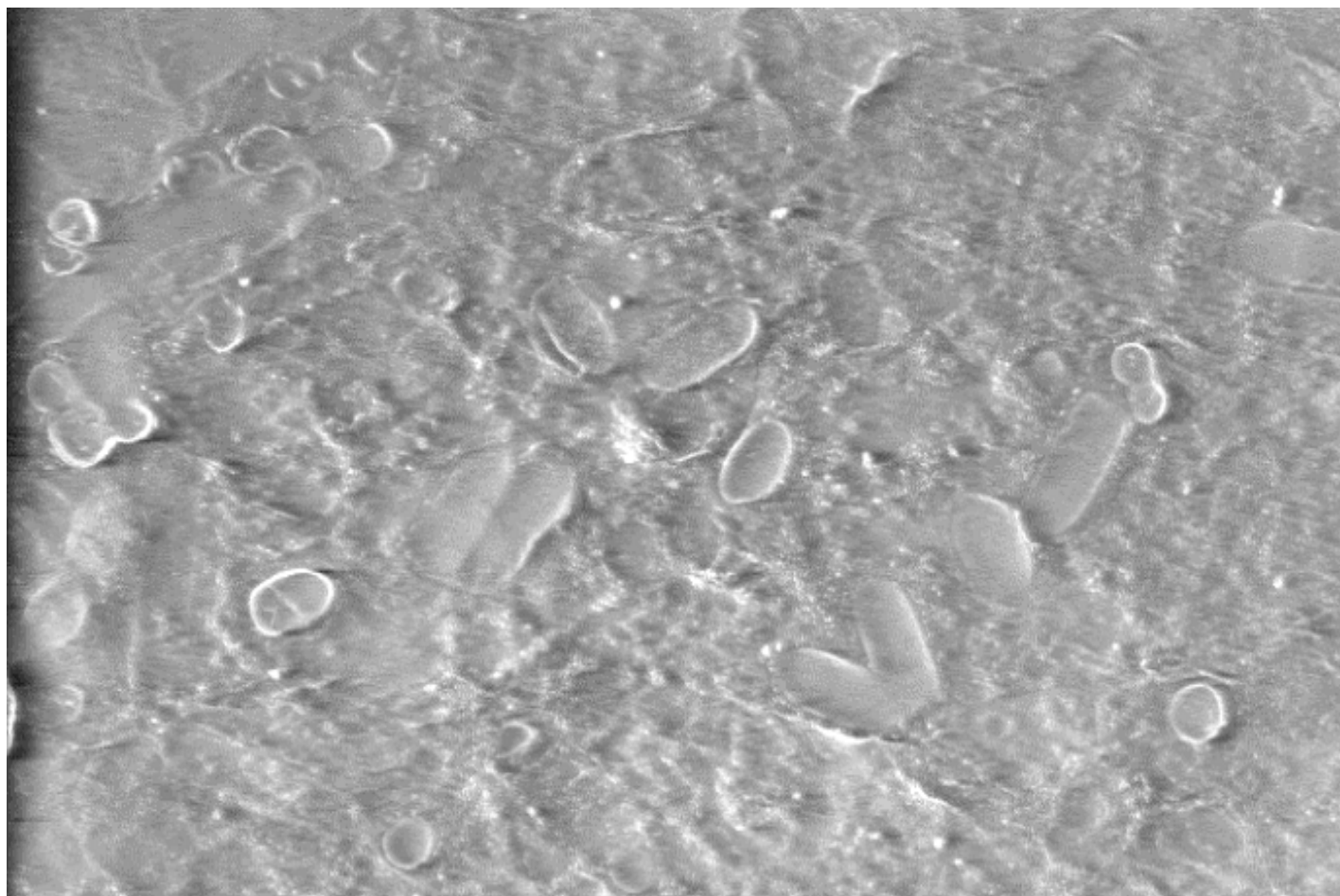
588

589

590

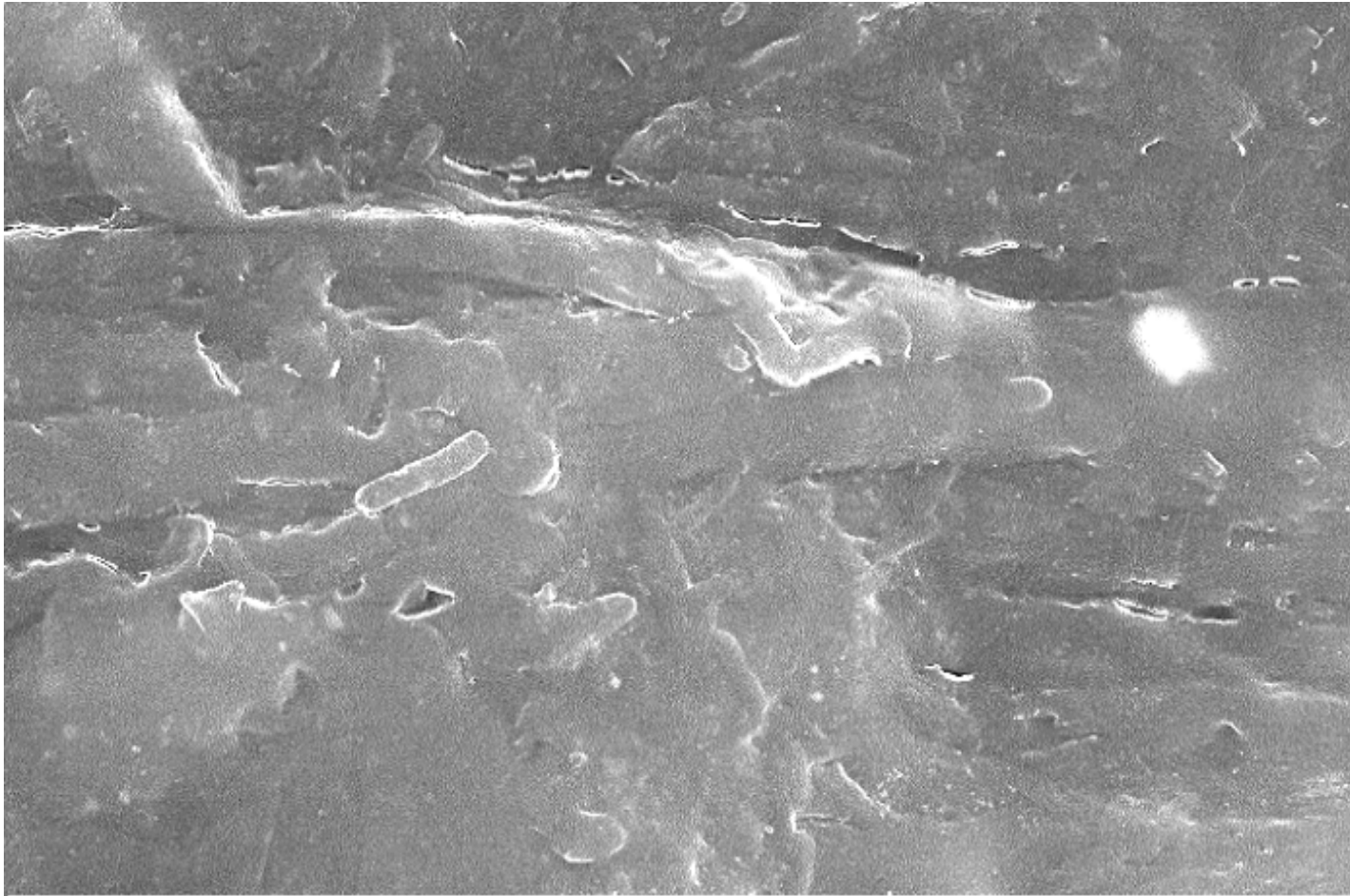


591



**Salmonella Biofilm - Study 2**  
**Treatment 3: Quaternary Ammonium**

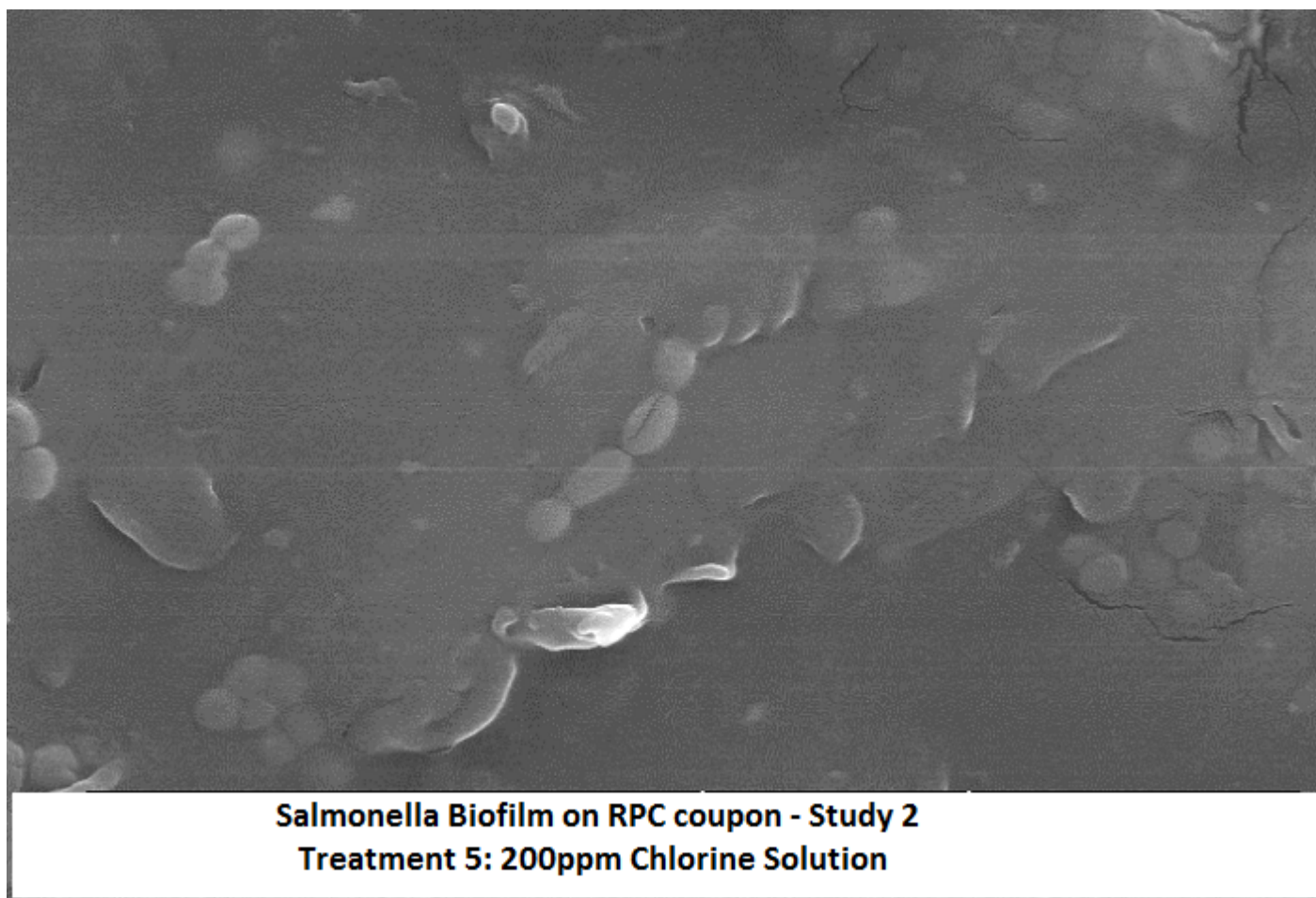
592  
593  
594  
595  
596  
597  
598  
599



**Salmonella Biofilm - Study 2**  
**Treatment 4: Hot Water/Alkaline Detergent + 205ppm Chlorine**

600  
601  
602  
603  
604  
605  
606

607



608

609

610

611

612

613

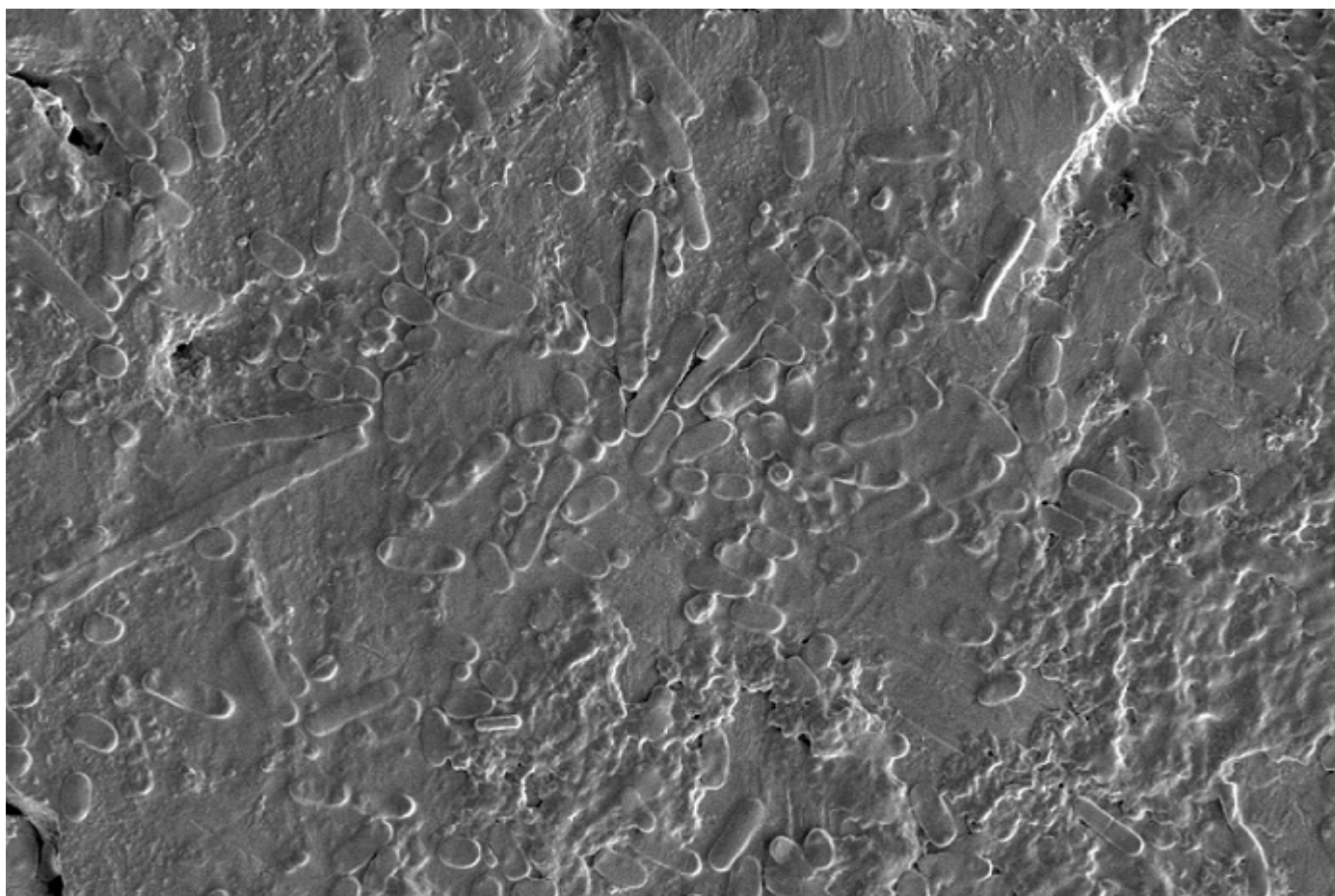
614

615

616

617





**Salmonella Biofilm - Study 2**  
**Treatment 6: Untreated Control**

618  
619  
620  
621  
622  
623  
624  
625  
  
626  
  
627  
628  
629  
630  
631  
632  
633  
634

